

A newsletter  
of activities,  
travel and  
tours, events,  
and valuable  
information  
for Peninsula  
Seniors



PENINSULA SENIORS  
**Connections**  
*make life fun!*

## Reflections on 2023, Looking Forward to 2024

### 2023 was a memorable year

for Peninsula Seniors. We:

- increased our community to almost 1,000 members;
- offered 90 opportunities every month to participate in cultural, social, educational, and wellness programs promoting mental and physical health;
- held three signature events, each attended by more than 150 members and guests;
- provided travel opportunities near and far;
- doubled the number of participating merchants in our Hot Deals program; and
- celebrated our 40-year anniversary, for which we were honored for our commitment to seniors with a Commendation and a program grant from L.A. County Board of Supervisors Chair Janice Hahn; a Certificate of Recognition from Rolling Hills Estates Mayor Britt Huff; and a Proclamation from Rancho Palos Verdes Mayor Barbara Ferraro.

**In the new year**, we'll be developing exciting programs and activities to promote your well-being and active participation. As we grow and look for new ways to expand our offerings, we ask for your suggestions to *make life more fun*.

We are extremely thankful for the many gifts we are given daily. We would not be here without the continuing and generous support of you, our loyal members, and our community. We are grateful to you all year, especially during this holiday season.

---

*Pictured above. Los Angeles County Supervisor Janice Hahn, left, presented a Commendation to Peninsula Seniors on October 26 to acknowledge Peninsula Seniors 40 years of service to seniors. Accepting were Peninsula Seniors Board of Directors President Linda Ralls, center, and Executive Director Margie Beierschmitt.*

### PENINSULA SENIORS MISSION AND VISION

Our mission is to offer activities and services that enhance and enrich the lives of senior adults on the Palos Verdes Peninsula and in the surrounding community.

Our vision is to provide opportunities for Peninsula Seniors to be the most active, educated, and healthy in California.

### BOARD OF DIRECTORS

#### Officers

President: Linda Ralls

Vice President: Vidya Kaushik

Secretary: Cindy Miller

Treasurer: Anil Aggarwal

#### Members

Tom Hyatt

Greg Sparkman

Sue MacKenzie

Pinfun Tsai

Larry Moreau

Andrew Werts

Julia Parton

### HONORARY LIFE MEMBERS

Anil & Madhvi Aggarwal

John+ & Dorothy+ Bohannon

Mike+ & Virginia Ciorica

Russ Harrington+

Gene Hollander+

Elaine Jerome

Marylyn & Chuck Klaus

Allen & Dottie Lay

Richard & Melanie Lundquist

Edith Mayerson+

Ralph+ & Loraine Scriba

Ann Shaw

Elly & Robert+ Visser

+ = deceased member

### EXECUTIVE DIRECTOR

Margie Beierschmitt

### OFFICE STAFF AND VOLUNTEERS

Travel: Jo Anne Weber

Webmaster: Tim Farmer

Programs/Contributing Connections Author:

Renée Reymond

### CONNECTIONS NEWSLETTER

Editor: Christine Barnicki

Published monthly by Peninsula Seniors, a  
501(c)(3) Tax-Exempt, Non-Profit Corporation.  
Tax ID: 95-3723540

Monthly circulation: 1,400

602 Deep Valley Drive, Suite 310


Rolling Hills Estates CA 90274

P: (310) 377-3003

W: [pvseniors.org](http://pvseniors.org) E: [seniors@pvseniors.org](mailto:seniors@pvseniors.org)

### STAY CONNECTED

 [facebook.com/pvseniors](https://facebook.com/pvseniors)

 [X.com/PenSeniors](https://x.com/PenSeniors) (formerly Twitter)

 [instagram.com/peninsulaseniors/](https://instagram.com/peninsulaseniors/)

### DISCLAIMER

The "Peninsula Seniors Corporation" does not assume responsibility for errors, omissions, or misinformation nor do we recommend, endorse, or guarantee products, professional services, or personal opinions expressed. Activities and services may be added, deleted, or rescheduled.




## Thanks to All, and to All A Good New Year

**As we approach** the end of the year, we look forward to what the new year will bring for Peninsula Seniors and for you, our members, volunteers, and those who support this special organization. I also look at our many accomplishments this past year.

We have almost 1,000 members, about 100 volunteers whose time and talents are invaluable, and we provide 90 opportunities each month for involvement. Some ideas for new programs come from our members. We'd love to hear about your suggestions for programs and activities.

This year, we celebrate 40 years of providing programs and activities in our community for seniors and others to come together, to learn, socialize, and have fun. We gratefully acknowledge all our many members, donors, volunteers, and friends whose support helps us continue to provide our programs and activities that help address the issues of isolation and loneliness for seniors. This would not be possible without YOU!

 Our Board and staff are deeply grateful for your support and involvement and wish each of you a wonderful holiday season and a healthy, happy new year.

With gratitude,

Linda Ralls

President, Board of Directors

# Membership News for Peninsula Seniors

Peninsula Seniors  
**Leave a  
Lasting Legacy**

## New and Returning Members

**WE WELCOME THESE NEW MEMBERS** who joined us in October.

Mina Abraham	Mary Devine	Sharon Ratterree
Olga Berganza	Janice Ferris	Elizabeth Scheid
Dave & Marie Chura	Betty Hatzeson	Carla Smith
Becky Clark	Karen Heermans	Stewart Steckel
Susan Cohn	Charles Lafferty	Winnie Weshler
Helen Connelly	Marcia Mills	Mary Wysocki
Joan Davidson	Diane Parr	
Vanessa Dean	Elaine Rahn	

**THANK YOU** to those who renewed their membership in October.

Pat Ackerman	Philip Gruskin & Antoinette Paglia	Jeff & Amy Romanelli
Nancy Bell	Karen Held	Ken & Loretto Russell
Nancy Black	Diana Hosken	Ahna Small
Tom Booth	Nedra Hunt	Gordana Swanson
Ralph Browning	Felice Hunter	Cathrine Tabellario
Pat Catalano	Jurica & Elsie Ivcevic	Jan Tighe
Gillian Cole	Jim Knight	Judy Tomic
Cindy Cuddie	Ginger Lai	Robert Urling & Mary Ann Morris
Karen Czerwinski	Maureen Linkogle	Lois Vannorsdall
Brenda Davis	Mary Ann Masek	Ann Vogel
Anne Dwyer	Liane Mason	Vee Wesson
Margareta Ericksen	Dennis McLaughlin	Carol Wharton
Therese Fletcher	Eileen Presson	Clay White
Nora Gecks	Betty Rodman	Peggy Woiwod

## Bequests Are For Everyone

**BENEFITS OF BEQUESTS:**

- Bequests require no donation during your lifetime.
- You can change your mind if your circumstances change.
- Bequests are welcome in any amount.
- You can leave money to your loved ones and Peninsula Seniors by specifying percentages to go to each.

**SAMPLE LANGUAGE**

I give/bequeath the sum of (\$ \_\_\_\_\_) to Peninsula Seniors, 501(c)(3) Tax-Exempt Non-Profit Corp., Tax ID: 95-3723540, residing at 602 Deep Valley Drive, Suite 310 Rolling Hills Estates CA 90274 for its general use and purposes.

**FOR MORE INFORMATION CALL**  
Margie Beierschmitt  
Executive Director, (310) 377-3003

## Membership Honor Roll

**PLATINUM (\$600/yr)**

Hal & Elena Bates  
Ken Dyda

**GOLD (\$400/yr)**

Becky Clark

## Above & Beyond

Thanks to those who made gifts of \$100 or more to Peninsula Seniors' operations in October.

Julia Parton  
Cathrine Tabellario  
Andrew & Jonna Werts

# HOT DEALS

## for Peninsula Seniors

Show your personalized Peninsula Seniors membership card to receive a Hot Deal. For current information about these merchants, including phone numbers and addresses, come in to the Scriba Family Center to pick up a detailed flyer, or visit our website: [pvseniors.org](http://pvseniors.org).

**Alltech of Lomita, Inc. NEW!**

2018 W. Lomita Blvd #1, Lomita  
(310) 539-2260 10% off notebook and computer repair in your home.

**Big Island Eats & Shave Ice**

Free tea w/\$10 purchase or more.

**CMS Design Portraiture**

Free session fee (\$150 value);  
10% off orders, plus 10% off orders placed at first preview viewing.

**Contessa Home Care NEW!**

Discounts on Basic-, Deluxe-, and Premium-package levels starting at 12 hours/day minimum. (323) 247-6065.  
[noraferguson@contessahc.com](mailto:noraferguson@contessahc.com)

**Courtesy Cleaners**

10% off dry cleaning orders over \$10.

**Crème de la Crêpe**

One dessert crepe with purchase.

**Dragonfly Thai**

10% off all purchases.

**El Pollo Inka**

With any purchase, 15% off lunch or dinner, complimentary lunch or dinner on your birthday.

**Elegance Automotive**

**Restoration** Auto detailing: \$65  
2-dr sports car; \$75 4-dr car; \$85 SUV/  
truck.

**Floral 101** 5% off floral arrangement; free delivery up to 6 miles from shop on purchases of \$70 or more.

**Fred Astaire Dance Studios**

10% off Beginners Pkg of 4 private and 2 group lessons, 2 parties.

**gingi.com** 15% off Gingi jewelry, paintings, note-cards, beauty, and lifestyle products w/ code PVSENIORS on [gingi.com](http://gingi.com) and at all Gingi art events.

**Giorgio's**

One tiramisu dessert/table at lunchtime.

**Golden Cove Pharmacy** 10% off medical supplies, over-the counter, and pro-grade supplements. 15% off pro-grade supplements on last day of the month. \*Restrictions may apply.

**The Grand Emporium**

20% off any purchase.

**Hillside Auto Repair**

10% off parts and labor on any service up to \$250. Free 30-point vehicle inspection and free car wash with any service.

**Kelly's Korner**

Free cookie or chips with sandwich purchase.

**Kim's BBQ**

10% off Monday through Thursday.

**Joey Komada, Licensed Acupuncturist & Herbalist**

15% off first treatment; 10% off subsequent treatments.

**Lunada Market & Deli**

10% off Tuesdays.

**Massage Smith LLC**

20% off products and services.

**Mayer's Bakery**

15% off purchases over \$10.

**Oil Stop NEW!**

Drive-through oil change: \$15 off.  
Coupon code PS602. 4100 Sepulveda Blvd (at Ocean), Torrance.

**Outdoor Dog Photography**

**NEW!** 10% discount on the Mini-Package, a \$265 value. (310) 818-1764

**Peninsula Physical Therapy.**

\$75/hr. (\$50 discount). \$100/mo. (\$25 discount) wellness program.

**Power Rooter & Plumbing Inc.**

15% off labor. [prpcustomerservice@gmail.com](mailto:prpcustomerservice@gmail.com).

**Ruby's Diner PV**

10% off entire bill! Not valid with other discounts, coupons, specials, fundraisers.

**SAGA Made in Italy**

15% discount on SAGA Made in Italy clothing line; 10% discount on everything else.

**Salon Vivace** 20% off hair cut, includes hair consultation, shampoo, cut, and style with select stylists.

**HOT DEALS  
HOT TIP:**

Keep your membership card  
and Hot Deals list in your car.

**Sepi Lackpour, Ph.D., L.Ac.**

**Acupuncture & Herbal  
Holistic Care** 15% off first  
treatment; 10% off subsequent  
treatments.

**South Bay Hearing **NEW!****

3734 Sepulveda Blvd., Torrance  
(310) 803-9468 FREE clean and  
check of your hearing aids; \$250 off  
new pair of AGX 9,7, or five hearing  
devices. Comp hearing aid consultations  
available.

**Still Got It Fitness**

25% off first month any membership;  
10% off all succeeding months.

**Truelement Massage**

20% off \$100 60-minute session,  
or 20% off a \$145 90-minute session.

**Truxton's**

15% off 3-5 pm; 10% off other times.

**Vee Wesson Design Visions**

(310) 213-4055 Offer: Remodeling,  
free 1-2 hours preliminary home  
design consultation. 5% off computer-  
generated design for one room or  
subject.

**Village Shoe Repair**

10% off repairs.

**What's Cookin' Cookware  
& Gifts**

Del Amo Mall, #328-A,  
Torrance. 15% off purchases.

*As of 11/9/23. Offers subject to change  
without notice. More Hot Deals coming soon!*



Please join us at  
an open house celebration as  
Peninsula Seniors marks its



40 years of making life fun  
for Peninsula Seniors!

**TUESDAY, DECEMBER 5  
2-4pm**

**Scriba Family Center**

Invite your family, friends, and  
prospective members to join you  
and enjoy some light refreshments  
as we celebrate this milestone.

**Reservations are a must!**

**Call (310) 377-3003.**

*Thank you to  
our event sponsor*





# Day Coach Trips and Multi-Day Tours

*make life fun!*

## WHEN YOU TRAVEL WITH PENINSULA SENIORS

- Sign up early for cruises and multi-day tours and trips. Group events are finalized 45 to 60 days before the trip.
- Tips are not included. \$3–\$5/day is the average tip for bus driver and tour director.
- Trip brochures and flyers are in the Peninsula Seniors office.
- Call (310) 377-3003 for trip details. Leave your name, phone, and the trip that interests you.

## CANCELLATION POLICY

If you must cancel, Peninsula Seniors will try, but cannot guarantee, your space will be sold. If your space is filled, the trip cost will be refunded to you, less a \$5 processing fee. If the space cannot be filled no refund can be made, regardless of the reason for cancellation, including medical-related excuses and emergencies. Thank you for your understanding.

## DAY TRIPS

### NEW YEAR'S EVE LUNCHEON THEATER

**Sun Dec 31**

\$194. Guest with member, \$184. Member \$174. Member early bird \$169 through Fri Dec 1.

10am check in at Norris Theatre. 10:30 depart. Return 5:30.

Three-course lunch (chicken, veggie pasta, or vegan tartare) with wine. Tribute to the fabulous folk songs of the '60s. Toast in the New Year on London time (4pm Pacific time).

## MULTI-DAY TRIPS

### NEW YEAR CELEBRATION IN SAN FRANCISCO

**Fri Dec 29–Tues Jan 2**

\$2,699pp dbl / \$3,999 single  
\$200pp deposit. Make checks payable to Friendly Excursions.

New Year's Eve dinner and party with midnight champagne countdown on New York time. Tour Carmel, Monterey, Sonoma, and San Francisco. Two wine tastings and visits to Cannery Row and Monterey Bay Aquarium.

### BALLOON FESTIVAL/ LAKE HAVASU, LAUGHLIN

**Thurs Jan 18–Sun Jan 21**

\$799pp dbl / \$989 single  
Make checks payable to Friendly Excursions.

VIP with lunch for the morning Mass Ascension; VIP with dinner for the night glow. Travel Route 66 to Kingman and Oatman. Three nights at Laughlin's Aquarius Casino.

### COUNT DOWN TO MARDI GRAS, NEW ORLEANS AND CAJUN COUNTRY

**Tues Feb 6–Sun Feb 11**

\$2,699pp dbl / \$3,299 single (includes airfare). Full payment due when signing up.

Attend the pre-Mardi-Gras Parade (reserved seating), tour New Orleans (walking in the French Quarter), Lafayette, and Baton Rouge. Ride- a-Bayou riverboat and visit Nottoway Plantation.

### HAWAIIAN ISLANDS CRUISE

**Sat March 16–Sun March 31**

Interior pp double from \$1,374. Balcony pp double from \$2,349. 10% deposit refundable until final payment due.

Sail aboard the *Discovery Princess* to Honolulu, Maui, Kona, Hawaii, and Ensenada, Mexico. Valid passport required.



# Peninsula Seniors

## Calendar For December 2023

MON

TUE

WED

THUR

FRI

**ABBREVIATIONS:**

HP=Hesse Park

PP=Promenade on the Peninsula

SFC=Scriba Family Center

\$=cost to attend

**1** Ping-Pong  
9-12, SFC

**American Mahjong**  
10-noon, SFC

**Bingo (\$)**, 1-2:30, SFC

**Bridge**, 1:30-3:30, SFC

**4** Meet & Greet  
10-Noon, SFC

**Mahjong**, 10, SFC

**Rummikub**  
1:30-3:30, SFC

**Conversational Spanish**  
1:45, SFC

**Modern Line Dancing**  
3:30-4:30, SFC

**5** Ping-Pong  
9-11, SFC

**Fitness Fun With Beverly (\$)**  
11, SFC

**OPEN HOUSE CELEBRATION!**  
2-4, SFC. See page 5.

**6** PV Walkers, 9, PP

**Bohannon Lecture**, SFC  
10:15 coffee, 10:30 lecture

**Pen Vets (\$)**, Noon, SFC

**Mahjong**, 1, HP

**Music Appreciation**  
3-4, SFC

**7** Ping-Pong  
9-11, SFC

**Fitness Fun With Beverly (\$)**  
11, SFC

**Thursday Book Club**  
11:30-1:15, SFC

**Craft & Chat**, 1-3:30, SFC

**Modern Line Dancing**  
3:30-4:30, SFC

**8** Ping-Pong  
9-12, SFC

**American Mahjong**  
10-noon, SFC

**Movie: "White Christmas"**  
12:30, SFC

**Bridge**, 1:30-3:30, SFC

**11** Meet & Greet  
10-Noon, SFC

**Mahjong**, 10, SFC

**Rummikub**  
1:30-3:30, SFC

**Conversational Spanish**  
1:45, SFC

**Modern Line Dancing**  
3:30-4:30, SFC

**12** Ping-Pong  
9-11, SFC

**Fitness Fun With Beverly (\$)**  
11, SFC

**Writers' Group**  
1:30-3, SFC

**13** PV Walkers, 9, PP

**Bohannon Lecture**, SFC  
10:15 coffee, 10:30 lecture

**Music Appreciation**  
3-4, SFC

**14** Ping-Pong  
9-11, SFC

**Fitness Fun With Beverly (\$)**  
11, SFC

**Craft & Chat**, 1-3:30, SFC

**Modern Line Dancing**  
3:30-4:30, SFC

**15** Ping-Pong  
9-12, SFC

**American Mahjong**  
10-noon, SFC

**Holiday Luncheon (\$)**  
12-2, The Original Red Onion Restaurant. MUST RSVP. See page 9.

**Bridge**, 1:30-3:30, SFC

**Trivia**, 1-2:30, SFC

**18** Meet & Greet  
10-Noon, SFC

**Mahjong**, 10, SFC

**Rummikub**  
1:30-3:30, SFC

**Conversational Spanish**  
1:45, SFC

**Modern Line Dancing**  
3:30-4:30, SFC

**19** Ping-Pong  
9-11, SFC

**Fitness Fun With Beverly (\$)**  
11, SFC

**Writers' Group**  
1:30-3, SFC

**20** PV Walkers, 9, PP

**Mahjong**, 1, HP

No Bohannon Lecture or Music Appreciation today.

**21** Ping-Pong  
9-11, SFC

**Fitness Fun With Beverly (\$)**  
11, SFC

**Craft & Chat**, 1-3:30, SFC

**Modern Line Dancing**  
3:30-4:30, SFC

**22** Ping-Pong  
9-12, SFC

**American Mahjong**  
10-noon, SFC

— — — —>

**WINTER HOLIDAYS BEGIN!**

SFC closed from noon, Fri Dec 22 thru Mon Jan 1

**25**

**26**



**27**

**HAPPY HOLIDAYS!**

**28**

**29**

**JANUARY 1**

— — — —>  
*Happy New Year!*

**2** OFFICE OPENS!

Peninsula Seniors usual programs and activities resume. See the January 2024 issue for details.

**3**

**4**

**5**

# Activities for Peninsula Seniors



1

(\$)

 indicates there is an additional cost to participate in the program or event.

## AVAILABLE TO THE COMMUNITY

### BOHANNON LECTURE SERIES at Scriba Family Center Wednesdays, 10:15 coffee / 10:30–11:30 am lectures

*Bring your friends to enjoy a cup of coffee and thought-provoking lectures on a variety of topics, all presented by local personalities.*



2

#### December 6: The Latest News About the Makeover at LAX

Nicole Carcel, Community Relations director at Los Angeles World Airports/LAX, will present an update on the LAX modernization project and what it means for holiday travel and next year.

**December 13: Deck the Halls.** Carolyn Yoshida and her Sweet Adelines Quartet will treat us to a variety of holiday sing-along caroler tunes to get in the holiday spirit.

**December 20 and 27:** No lectures. Enjoy the winter holidays.

For more information about the Bohannon Lectures, contact Renée Reymond at Peninsula Seniors, (310) 377-3003.



3

### MEET & GREET

**Mondays, 10 am–noon, SFC**

Have coffee, make new friends, chat, exchange ideas, and *make life fun!*



4

### PV WALKERS Wednesdays, 9 am

Promenade on the Peninsula, south end, level one, across from the nail salon.

PV Walkers is designed to get you moving! Join us for group stretches followed by walking in the mall at your own pace. Earn a raffle ticket

CHARCUTERIE CRAFTERS! 1) Chef Shirrell Edey, of Chefs for Seniors, taught us how to arrange a gourmet charcuterie board with a variety of cheeses, meats, fruits, nuts, vegetables, and more. Displaying their delicious-looking and beautiful boards are: 2) Merrily Adams, 3) Ginger Lai, and 4) Lynn Knudsen.





# WHITE CHRISTMAS

Join us to enjoy this traditional holiday classic!

Friday, Dec 8, 12:30 pm, SFC

each week you attend, and track your walking to win prizes! Post exercises, walkers are invited for coffee at the Peninsula Seniors Scriba Family Center.

For more information, call Peninsula Seniors at (310) 377-3003.

## **PEN VETS LUNCH (\$)**

**Wednesday, Dec 6, SFC**

**Doors open at 11:45; lunch w/program at noon**

Come join us for another wonderful program.

Presentation details are in the works as this issue goes to print. Since they're not quite finalized, the presentation will be a surprise.

*Everyone, not just vets, is welcome.* The \$20 admission includes a sandwich lunch. Pay on arrival. **No walk-ins.** Must RSVP to [audrey.goode@gmail.com](mailto:audrey.goode@gmail.com).

## **FOR MEMBERS ONLY**

### **MAHJONG**

**Mondays, 10 am, SFC**

**Wednesdays, 1 pm, Hesse Park.**

### **RUMMIKUB**

**Mondays, 1:30–3:30 pm, SFC**

Similar to rummy card games, Rummikub is a tile-based game for two to four players. The rules are simple, with free-flowing fun for everyone! RSVP to (310) 377-3003.

### **CONVERSATIONAL SPANISH CAFÉ Y CONVERSACIÓN**

**Mondays, 1:45 pm, SFC**

Improve your conversational Spanish skills. Practice basic speaking and listening skills in a friendly and social atmosphere. RSVP to (310) 377-3003.



### **HOLIDAY LUNCHEON AT THE ORIGINAL RED ONION RESTAURANT**

**736 Bart Earle Way, Rolling Hills Estates**

**Friday, December 15, 12–2pm**

A special menu includes the Red Onion salad, chips and salsa, chicken tacos, cheese enchiladas, Spanish rice and beans, cheesecake, and coffee, tea, or soda. \$50 pp. Limited space. **Make your reservation today** by calling (310) 377-3033. Members only.

### **TUESDAY BOOK CLUB**

Meets at SFC monthly at 10:30 on the fourth Tuesday, so no meeting in December. We'll see you next month on January 23. (This new book club is full. If you're interested in launching another book club, let us know by calling (310) 377-3003.)

### **PING-PONG**

**Tuesdays & Thursdays, 9–11 am, SFC**

**Fridays, 9–noon, SFC**

Come play with us! All skill levels are welcome.

### **FITNESS FUN WITH BEVERLY (\$)**

**Tuesdays & Thursdays, 11 am, SFC**

Join this fun fitness class designed to provide gentle toning for all fitness levels. This session incorporates bands, balls, and weights to help you sculpt and strengthen your body with care. Taught by Beverly Beatty, certified Advanced Health and Fitness Instructor. \$90 for 3 months.

*—Activities continues on the following page*

## FOR MEMBERS ONLY, *continues*

### CONVERSATIONAL JAPANESE

**NEW  
CLASS!**

Begins Tuesday, January 9, 1:30–3 pm, SFC  
Learn basic conversation skills in a social setting with instructor Ryoji. Join in the fun on the second and fourth Tuesdays of the month. RSVP to (310) 377-3003.

### WRITERS' GROUP

Tuesdays, 1:30–3 pm, SFC

Budding and seasoned authors write poetry, document travels, or write chapters for their books.

### MUSIC APPRECIATION

Wednesdays, 3–4 pm, SFC

No class December 20 or 27.

Join Ann and Lee Strong as we discuss classical and winter music of myriad genres. December's first two Wednesday lectures will complete our series on the Music of Winter. We'll sample and discuss non-holiday winter music pieces of several genres from the 18th, 19th, and 20th centuries. All of the pieces make reference to the winter season.

In the new year, beginning Wednesday, January 3, we'll continue our study of music from the Romantic Period of classical music.

Attendees: Call (310) 377-3003 to RSVP.

### THURSDAY BOOK CLUB

Thursday, Dec 7, 11:30–1:15 pm, SFC

### CRAFT AND CHAT

Thursdays, 1–3:30 pm, SFC

Bring your craft to work on while you socialize with friends. Call (310) 377-3003 to register, and tell us what your craft is.

### AMERICAN MAHJONG!

Fridays, 10–noon, SFC

Must have your own "Official Standard Hands and Rules."

**BRIDGE** Fridays, 1:30–3:30 pm, SFC

Must RSVP: (310) 377-3003.

**BINGO! (\$)** Friday, Dec 1, 1–2:30 pm, SFC

\$2/card. Cash prizes! Must RSVP: (310) 377-3003.

Ken Dyda returns to call!!

### MOVIE TIME

Friday, Dec 8, 12:30 pm, SFC

"White Christmas"

This holiday classic stars Bing Crosby, Danny Kaye, and Rosemary Clooney. Two singers and a sisters' act perform a Christmas show at a failing rural Vermont country inn. They plan a charming yuletide miracle to put the inn back in business. (2hrs) 1954

Attendees must RSVP: (310) 377-3003.

**TRIVIA!** Friday, Dec 15, 1–2:30 pm, SFC

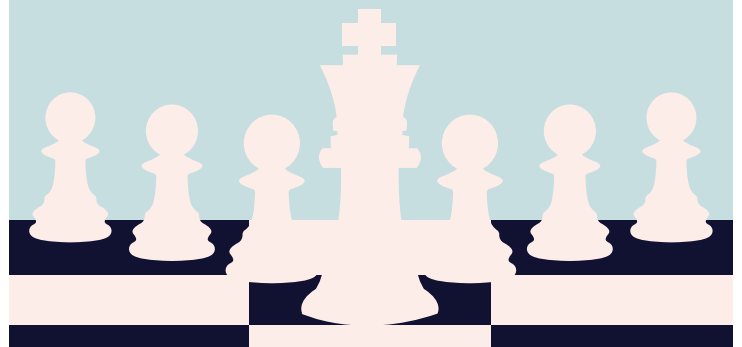
Tease your brain with fun and interesting questions.

BYOT: If you have a great question, bring it!

## Chess

***comes to the Scriba Family Center!***

Call (310) 377-3003 to let us know you're interested and to register, and we'll share your contact information with other like-minded chess players so mutually convenient play times can be arranged.





1



2



3

# Celebrating Our 40th Anniversary *Made Life Fun!*



4



5



6



7

## 40th Anniversary Cocktail Reception, October 26, 2023

1. Donna Duperon, left, and Linda Ralls, President, Peninsula Seniors Board of Directors. 2. PV Magazine publisher Kristin Borden, left, and Julia Parton, member, Peninsula Seniors Board of Directors. 3. John Williams and Audrey Kraake-Suer. 4. Eric Samuelson, center, and his mom, Alberta, right, conversed with Music Appreciation volunteer Ann Strong, back to camera. 5. Pam Barrett-Hill and John Exline. 6. Del McCulloch, left, and Gloria Manganò. 7. Peninsula Seniors Board of Directors members Sue MacKenzie and Tom Hyatt. 8. Kimi Miwa, left, and, representing the new Peninsula Pointe Senior Living facility in Rolling Hills Estates, Michelle Winn. 9. From the left: Diane and Eric Schott with Ray Ginnochio and Jeanette Betts.



8



9



# Peninsula Seniors

602 Deep Valley Drive, Suite #310 Rolling Hills Estates CA 90274

CHANGE SERVICE REQUESTED

NON-PROFIT ORG.  
US POSTAGE PAID  
Torrance CA  
PERMIT NO. 302



**DATED MATERIAL.  
PLEASE DELIVER BEFORE DECEMBER 1**

**ADDRESS LABEL MUST BE LEVEL INSIDE THIS BOX**

## Give a holiday gift that can *make life fun.*

A Peninsula Seniors membership is a path to new friendships, educational and travel opportunities, health and wellness programs, Hot Deals discounts, and more.



### Enjoy Great Member Benefits!

To arrange for your gift, come into the Scriba Family Center or call (310) 377-3003.